

# ELASTICS



## 17.0. Elastics

### 17.1. Universal Elastomeric Ligature Ties

We manufacture ligatures from elastomeric polyurethane in 27 colors. Patients will appreciate our many color choices! Ligatures are latex-free and contain no BPA or plasticizers.

Our molded dispensing units are sold in 84, 24, and 10 ligatures per unit to help the orthodontist avoid cross-contamination from patient to patient.

The Mini-ties (for "mini" brackets or increased torque) contain 144 ligatures per unit.

**All our Elastics are made in USA**

- These Latex-free elastic ligature ties are designed to maximize office efficiency while promoting patient compliance. Our feature includes.
- A very high resistance to breaking or tearing during placement or treatment, saving laudable chair time and promoting patient confidence.
- High flexibility and resiliency without stiffness, making ties easier to place and remove while providing a longer lasting more effective tie.
- Our ties are colorfast to improve patient satisfaction and compliance.
- 12 sticks per pack for a total of 1,008 ties per pack.

#### ELASTOMERIC COLOR CHART



### UNIVERSAL LIGATURE ELASTICS

COLORS	CODE	COLORS	CODE	COLORS	CODE
Clear	350-700	Kelly Green	350-710	Red	350-721
Dark Gray	350-701	Lilac	350-711	Neon Pink	350-722
Silver	350-702	Teal	350-712	Baby Blue	350-723
Purple	350-703	Sparkle Blue	350-713	Turquoise	350-724
White	350-704	Black	350-714	Glow in Dark	350-725
Fuchsia	350-705	Royal Blue	350-715	Orange	350-726
Baby Pink	350-706	Midnight Blue	350-716	Pearl	350-728
Aqua	350-707	Neon Green	350-717	Ivory	350-729
Sparkle Red	350-708	Mixed Color	350-718	Coral	350-730
Magenta	350-727	Sparkle Green	350-719		
Yellow	350-709	Gold	350-720		



## 17.2. Individual Patient Ties

- Potential patient cross contamination is eliminated by individual patient configuration
- 120" sizes
- Packaged in bags of 45 dispensers, 22 ties per dispenser
- Individual Patient Tie Packs
- Multi-Color Patient Tie Packs



### ELASTICS

COLORS	CODE	COLORS	CODE	COLORS	CODE
Clear	350-600	Yellow	350-609	Mixed Color	350-618
Dark Gray	350-601	Kelly Green	350-610	Sparkle Green	350-619
Silver	350-602	Lilac	350-611	Gold	350-620
Purple	350-603	Azure	350-612	Sparkle Red	350-621
White	350-604	Sparkle Blue	350-613	Neon Pink	350-622
Fuchsia	350-605	Black	350-614	Royal Blue	350-623
Light Pink	350-606	Periwinkle	350-615	Turquoise	350-624
Aqua	350-607	Midnight Blue	350-616	Glow in Dark	350-625
Red	350-608	Neon Green	350-617	Orange	350-626

## 17.3. Figure 8

If you already Figure 8...

- Easier for chair side personal
- More OR Less Friction
- More Color appears
- Small, Medium, Large size
- Come in 18 colors
- All FDA and CE approved material
- 100% Virgin resin used as all our other ligature
- Of Course NO LATEX



Use a [Vertical](#) configuration to lessen pressure sure on arch wire friction especially in early treatment  
 Use a [Horizontal](#) configuration to put more pressure on arch wire. More friction when need in later treatment.

### Figure 8

	Small	Medium	Large
Clear	350-850	350-851	350-852
Silver	350-853	350-854	350-855






## 17.4. Elastomeric Chain

Our chain elastics are designed with the same materials and properties as our elastomeric ligatures. This assures resistance to breakage and tearing high flexibility and memory, color fastness, and the highest quality and consistency available to the orthodontic professional. Our three styles of chain spacing also provide more efficient and effective intraoral use. Chain colors match ligature tie colors. One 15-foot spool per package.

**NO LATEX Contains**

### Elastomeric Chain

			
	CONTINUOS	MEDIUM	LONG
Clear	AE300-001	AE300-101	AE300-201
Silver	AE300-002	AE300-102	AE300-202
Gray	AE300-003	AE300-103	AE300-203
Blue	AE300-004	AE300-104	AE300-204
Fuxia	AE300-005	AE300-105	AE300-205
Midnight blue	AE300-006	AE300-106	AE300-206
Yellow	AE300-007	AE300-107	AE300-207
Orange	AE300-008	AE300-108	AE300-208
Pink	AE300-009	AE300-109	AE300-209
Baby Blue	AE300-010	AE300-110	AE300-210
Black	AE300-011	AE300-111	AE300-211
Purple	AE300-012	AE300-112	AE300-212
Green	AE300-013	AE300-113	AE300-213
Neon Green	AE300-014	AE300-114	AE300-214
Red	AE300-015	AE300-115	AE300-215
White	AE300-016	AE300-116	AE300-216
Aqua	AE300-017	AE300-117	AE300-217
Lilac	AE300-018	AE300-118	AE300-218
Turquoise	AE300-019	AE300-119	AE300-219

## 17.5. Intra-oral Latex Elastic

### Latex Elastics

We manufacture Both Latex and NON-LATEX intra-oral orthodontic elastics. These are normally packaged in our stock bags with standard color-coding. They are made in 1/8", 3/16", 1/4", 5/16", and 3/8". They are available in amber or mixed neon colors. Our elastics are QC' for consistent forces of 2.5 ounces, 4.5 ounces and 6.5 ounces. Special sizes and forces can be accommodated as well. Elastics are normally packaged 50 bags of 100 elastics per bag. We offer our elastics in BULK, if required Our NON-LATEX is processed on dedicated cutters to isolate any allergens!



### Latex Elastics Pkg.5000

	1/8" 3.2 mm.	3/16" 4.8 mm.	1/4" 6.4 mm.	5/16" 7.9 mm.	3/8" 9.5 mm.
Bag Color	Purple	Green	Red	Blue	Orange
Light 2.5oz	AE310-731	AE310-741	AE310-751	AE310-761	AE310-771
Medium 4.5oz	AE310-735	AE310-745	AE310-755	AE310-765	AE310-775
X-Heavy 6oz	AE310-736	AE310-746	AE310-756	AE310-766	AE310-776





## 17.6. Neon Elastic

Five bright colors mixed in each patient bag. Packaged in tamper proof patient bags. Forces in Ounces Equals 3x Passive Diameter. Light 2.5oz Medium 4.5oz X-Heavy 6oz

### Neon Elastics Pkg.5000

	1/8" 3.2 mm.	3/16" 4.8 mm.	1/4" 6.4 mm.	5/16" 7.9 mm.	3/8" 9.5 mm.
<b>Bag Color</b>	<b>Purple</b>	<b>Green</b>	<b>Red</b>	<b>Blue</b>	<b>Orange</b>
Medium 4.5oz	AE310-535	AE310-545	AE310-555	AE310-565	AE310-575
X-Heavy 6oz	AE310-536	AE310-546	AE310-556	AE310-566	AE310-576



## 17.7. Intra-Oral NON latex Elastics

### Ultra Non Latex Elastics

Eliminates concerns over latex allergic reactions Crystal clear appearance, for a great esthetic look in the mouth. Same force and sizing as latex elastics. Longer shelf life than latex. Perfect for use with aligner cases and ceramic and composite brackets. Packaged in tamper proof patient bags of 100 elastics each; 50 bags per dispenser box. Forces in

Ounces Equals 3x Passive Diameter

	1/8" 3.2 mm.	3/16" 4.8 mm.	1/4" 6.4 mm.	5/16" 7.9 mm.	3/8" 9.5 mm.
<b>Bag Color</b>	<b>Purple</b>	<b>Green</b>	<b>Red</b>	<b>Blue</b>	<b>Orange</b>
Light 2.5oz	AE310-631	AE310-641	AE310-651	AE310-661	AE310-671
Medium 4.5oz	AE310-635	AE310-645	AE310-655	AE310-665	AE310-675
X-Heavy 6oz	AE310-636	AE310-646	AE310-656	AE310-666	AE310-676

## 17.8.Extra Oral Latex Elastics



Activated force is reached when elastic is stretched three times its original size Available in bags of 1,000 elastics

### Extra Oral Latex Elastics

<b>Diameter</b>	1/8" 3.2 mm	5/16" 7.9 mm.	3/8" 9.5 mm.	1/2" 9.5 mm.
<b>14oz</b>	AE310-401	AE310-404	AE310-407	AE310-410
<b>16oz</b>	AE310-402	AE310-405	AE310-408	AE310-410



## SEPO Loops: Separate Teeth

All our separators have NO LATEX, NO BPA, no plasticizers! Standard SEPOs come in blue and radio opaque. SEPO-IIs are color-coded light blue for moderate force and purple for heavier force.

- Ideal for Posteriors Separators
- Will Stretch out to Maximum Limit using Separator Plier
- Will return Creating Spacing Between Teeth
- Available in Radio-Opaque for Safer Treatment



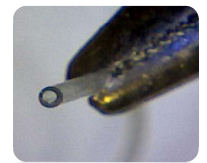
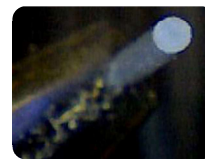
SEP-O-LOOPS			SEP-O-IIs		
	Posterior (Blue)	Radiopaque (Dark Blue)	Color	Light Blue Moderate Force	Purple Heavy Force
<b>100 Pkg.</b>	AE310-101	AE310-102	<b>100 Pkg.</b>	AE310-103	AE310-104

Standard SEP-O-S do not have knobs but are available in radio-opaque  
SEPO-IIs have knobs and outstanding strength SEPO-II loops in action and elastomer memory

## 17.9. Elastic Wire

### Ultra-Tuff Elastomeric Thread

- Unique patented manufacturing process provides a rough surface on the thread
- Excellent elasticity and memory
- Knots will not move or become undone during treatment
- Available in .020", .025", .030", diameter sizes
- Comes in spools of 25 feet



#### Elastomeric Thread Round Smooth Spool

	.025	.030
<b>Clear</b>	AE310-001	AE300-002
<b>Gray</b>	AE310-004	AE300-005

#### Elastomeric Thread Round Textured

	.025	.030
<b>Clear</b>	AE310-006	AE310-007
<b>Gray</b>	AE310-008	AE310-009

#### Elastomeric Tubing Smooth

	.025 O.D.	.030 O.D.
<b>Clear</b>	AE310-011	AE310-012
<b>Gray</b>	AE310-013	AE310-014

## 17.10. Elastomeric Tissue Guard

- Helps with patient compliance during treatment
- Comes in .018" and .027" diameter sizes
- Provides an excellent fit to the arch wire and stops food from entering the tube.
- Highly resistant to staining
- Available in gray, clear, and opaque tooth color, in 10 foot spools



#### Arch-wire Sleeving

Catalog No.	.018 Diameter	.027 Diameter	.045 Diameter
Gray	AE310-016	AE310-017	AE310-036
Clear	AE310-018	AE310-019	AE310-035